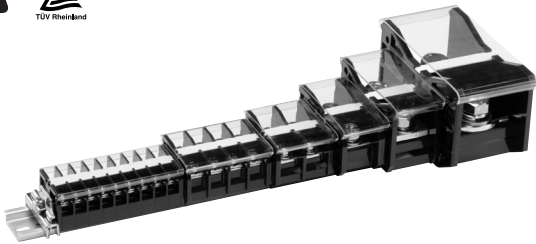


Rail Type Terminal Block

Multi-rail Standard type

TX series



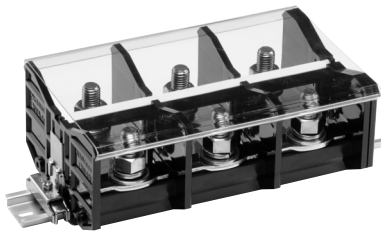
Multi-rail Raised type

TXU series



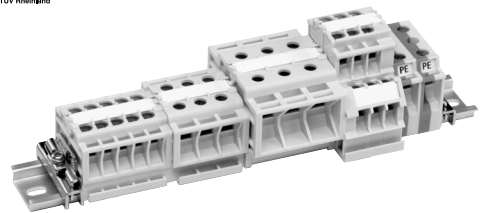
Multi-rail Stud type

TXW series



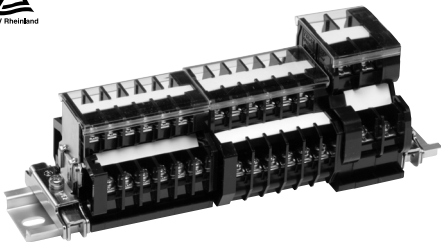
Finger protection type

TFP and TTFP series



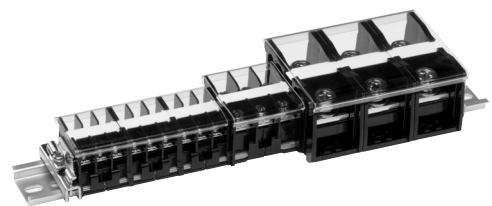
2-stage type

TTG, TTJ and TT series



Quick joint rail type

TN series



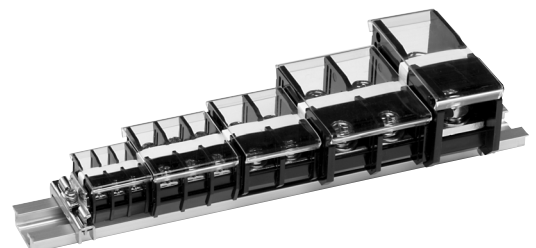
Small rail type for equipment

TXJ series



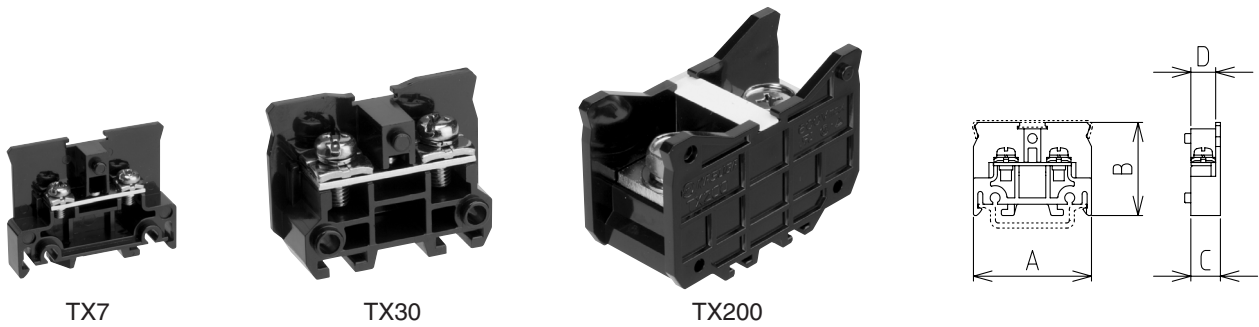
C rail type

TR series

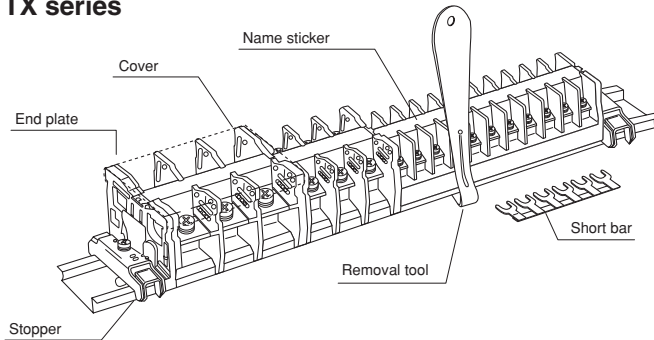


Standard type

Application				Type name	External dimensions (mm)				
					A	B	C	D	
Terminal unit									
600V	1.25mm ²	[15A]	M3 x 6 ± screw type	TX 7	38	29	7.3	6	
	2mm ²	[20A]	M3 x 8 ± screw type	TX 10 SM3			8	6.7	
			M3.5 x 8 ± screw type	TX 10 S			9.5	8	
			M3.5 x 8 ± screw type	TX 10					
	5.5mm ²	[40A]	M4 x 10 ± screw type	TX 20	46	34	14.5	12.5	
	8mm ²	[50A]	M5 x 12 ± screw type	TX 30			37	15	
	14mm ²	[80A]	M5 x 12 ± screw type	TX 50	54	38	19.5	17	
	22mm ²	[90A]	M6 x 12 ± with round washer	TX 60			72	45	27
	38mm ²	[130A]	M8 x 14 +hexagonal bolt	TX 100	76	51	28	25	
	60mm ²	[175A]	M8 x 16 +hexagonal bolt	TX 150	82	57.5	39	31	
	100mm ²	[240A]	M10 x 12 +hexagonal bolt	TX 200	86	62.5	46	37.5	
	150mm ²	[310A]	M10 x 20 +hexagonal bolt	TX 300	120	73.5	62	52	
	200mm ²	[400A]	M12 x 25 hexagonal bolt	TX 400					
	150mm 2 × 2	[500A]	M16 x 40 stud	TX 600					86.5
200mm ²	[400A]								
250mm ²	[500A]								
325mm ²	[600A]								
End plate									
For TX7 to TX20				TXA 1	38	29	Thickness 3		
For TX30				TXA 3	46	34			
For TX50				TXA 5	49	37			
For TX60				TXA 6	54	38	Thickness 3.5		
For TX100				TXA 10	72	45	Thickness 4		
For TX150				TXA 15	76	51			
Insulation barrier									
For TX600 (Dimension A 240 mm in setting)				TXH 60	—	—	—		



TX series

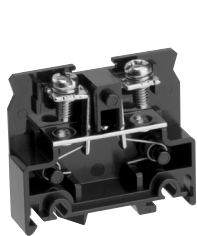


Multi-rail terminal block

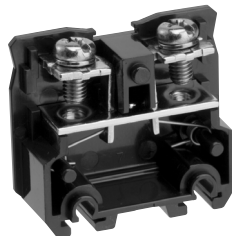
TX, TXU and TXW Series

Raised type

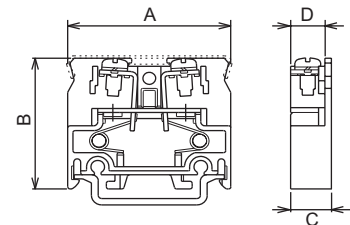
Application				Type name	External dimensions (mm)						
					A	B	C	D			
Terminal unit											
600V	1.25mm ²	[15A]	M3 x 8 ± raised type	TXU 7	38	32.5	7.3	6			
	2mm ²	[20A]	M3 x 8 ± raised type	TXU 10 SM3			8	6.7			
			M3.5 x 8 ± raised type	TXU 10 S			9.5	8			
			M3.5 x 8 ± raised type	TXU 10							
	5.5mm ²	[40A]	M4 x 8.5 ± raised type	TXU 20	46	40	14.5	12.5			
	8mm ²	[50A]	M5 x 12 ± raised type	TXU 30			42	15			
	14mm ²	[80A]	M5 x 12 ± raised type	TXU 50			54	44	19.5	17	
	22mm ²	[90A]	M6 x 12 ± raised type	TXU 60							
38mm ²	[130A]	M8 x 15 +hexagonal bolt raised type	TXU 100	72	57	27	24				
End plate											
For TXU7 to 20				TXUA 1	38	32.5	Thickness 3				
For TXU30				TXUA 3	46	40					
For TXU50				TXUA 5	49	42					
For TXU60				TXUA 6	54	44	Thickness 3.5				
For TXU100				TXUA 10	72	57	Thickness 4				



TXU10



TXU30



Rating when the product is used as UL/CSA certified part or EN/IEC standard certified part (TÜV certification CE)

Basic type name		Rated voltage (V)	EN/IEC standard			UL standard			CSA standard	
Standard type	Raised type		Rated current (A)	Applicable wire (AWG/MCM) ^{Note}		Rated current (A)	Applicable wire (AWG/MCM) ^{Note}		Rated current (A)	Applicable wire (AWG/MCM) ^{Note}
		Single wire		Stranded wire	Single wire		Stranded wire			
TX 7	TXU 7	600	15	20 to 16	20 to 16	10	20 to 16	20 to 16	10	20 to 16
TX 10 SM3	TXU 10 SM3	600	20	20 to 14	20 to 14	15	20 to 14	20 to 14	15	20 to 14
TX 10 S	TXU 10 S	600	20	20 to 14	20 to 14	15	20 to 14	20 to 14	15	20 to 14
TX 10	TXU 10	600	25	20 to 14	20 to 14	20	20 to 14	20 to 14	20	20 to 14
TX 20	TXU 20	600	40	18 to 10	18 to 10	30	18 to 10	18 to 10	30	18 to 10
TX 30	TXU 30	600	60	16 to 10	16 to 8	50	16 to 12	16 to 10	45	16 to 8
								*8		
TX 50	TXU 50	600	60	16 to 8	16 to 8	30	16 to 10	16 to 10	—	—
			80	—	*6	65	—	*6		
TX 60	TXU 60	600	110	*14 to 10	*14 to 4	80	*14 to 10	*14 to 4	80	*14 to 4
TX 100	TXU 100	600	140	—	*8 to 2	115	—	*8 to 2	115	*8 to 2
TX 150	—	600	190	—	*4 to JIS60mm ²	175	—	*6 to 2/0	175	*6 to 2/0
TX 200	—	600	300	—	*2 to JIS100mm ²	230	—	*4 to 4/0	230	*4 to 4/0
TX 300	—	600	350	—	*2 to JIS150mm ²	310	—	*4 to 350	310	*4 to 350
TX 400	—	600	540	—	*JIS100 to 250mm ²	380	—	*1/0 to 500	380	*1/0 to 500

Notes

The table above is based on connection to the copper bare wire and the crimp terminal. The applicable wires with * indicates connection to the crimp terminal

only. Use UL standard parts and CSA standard parts for crimp terminal. Be careful for the following points:

- Connection to crimp terminal: Use the crimp terminal with insulated coating or insulate the bare crimp terminal with sleeve, tube or tape.
- Connection to two bare wires: Connect the wire with the same size and type (single wire or stranded). Do not connect the wires with different sizes and types.

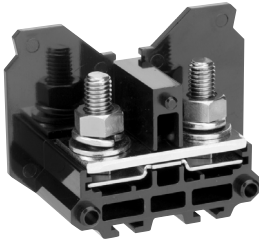
Terminal Blocks

Multi-rail terminal block

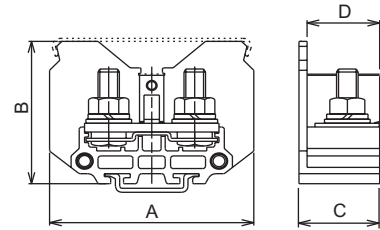
TX, TXU and TXW Series

Stud type

Application				Type name	External dimensions (mm)			
					A	B	C	D
Terminal unit								
600V	38mm ²	[130A]	M8 x 25 stud	TXW 100	76	56.5	30	27
	60mm ²	[175A]	M8 x 20 stud	TXW 150		51	28	25
	100mm ²	[240A]	M10 x 30 stud	TXW 200	88	61	35	31
	200mm ²	[400A]	M12 x 35 stud	TXW 400	116	73.5	62	52
	150mm 2 × 2	[500A]						
End plate								
For TXW100 and TXW100D				TXWA 10	76	56.5	Thickness 4	
For TXW150				TXA 15		51		
For TXW200 and TXW200D				TXWA 20	88	61		
For TXW400				TXWA 40	116	73.5	Thickness 5	



TXW100



Finger protection terminal block

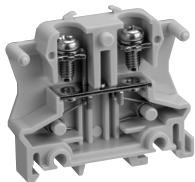
TFP and TTFP Series

Application				Type name	External dimensions (mm)			
					A	B	C	D
Terminal unit								
Standard type 600V	1.25mm ²	[15A]	M3 x 8 ± raised type	TFP 15 □	42	36.5	7	6
	2mm ²	[20A]	M3.5 x 8 ± raised type	TFP 20 □	42	36.5	8	6.7
	5.5mm ²	[40A]	M4 x 8.5 ± raised type	TFP 40 □	47	38.5	11	9.7
	14mm ²	[80A]	M5 x 10 ± raised type	TFP 80 □	65	47.5	14	12.5
2-stage type 600V	2mm ²	[20A]	M3 x 8 ± raised type	TTFP 203 □	69	60.5	8	6.7
			M3.5 x 8 ± raised type	TTFP 2035 □	69	60.5	8	6.7
For grounding 600V	2mm ²		M3.5 x 8 ± raised type	TFE 20	51.5	39.5	9.5	6.7
	5.5mm ²		M4 x 8.5 ± raised type	TFE 40	53.5	41	12.5	9.7
End plate								
For TFP15 and TFP20				TFPA 20 □	42	36.5	Thickness 3	
For TFP40				TFPA 40 □	47	38.5	Thickness 3	
For TFP80				TFPA 80 □	65	47.5	Thickness 3	
For TTFP203 and TTFP2035				TTFPA 20 □	69	60.5	Thickness 8	

Note

□ of the type name indicates the body color designated symbol. Except for gray - standard color, the color designated product is built to order.

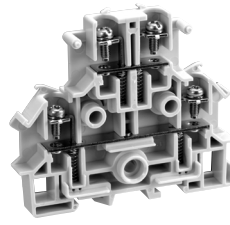
No symbol: Gray, R: Red, Y: Yellow, K: Black, B: Blue, W: White, G: Green



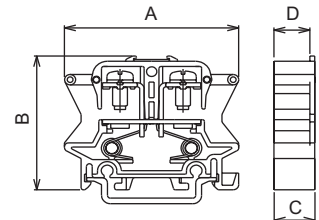
TFP20



TFE20



TTFP203



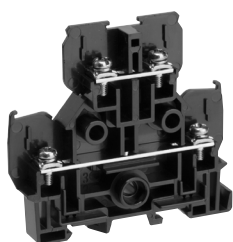
Rating when the product is used as UL.c-UL-us certified part or EN/IEC standard certified part (TÜV certification CE)

Type name ^{Note 3}	Rated voltage (V)	EN/IEC standard			UL standard				c-UL-us standard	
		Rated current (A)	Applicable wire (AWG/MCM) ^{Note 1}		Rated current (A)	Applicable wire (AWG/MCM) ^{Note 1}		FW ^{Note 2}	Rated current (A)	Applicable wire (AWG/MCM) ^{Note 1}
			Single wire	Stranded wire		Single wire	Stranded wire			
TFP 15	600	15	20 to 16 (0.5 to 1.5mm ²)	20 to 16 (0.5 to 1.5mm ²)	10	20 to 16	20 to 16	2	10	20 to 16
TFP 20	600	20	20 to 14 (0.5 to 2.5mm ²)	20 to 14 (0.5 to 2.5mm ²)	20	20 to 14	20 to 14	1	20	20 to *14
TFP 20 +	600	—	—	—	15	—	—	2	—	—
TFP 40	600	40	18 to 10 (0.75 to 6mm ²)	18 to 10 (0.75 to 6mm ²)	30	18 to 10	18 to 10	1	30	18 to *10
TFP 40 +	600	—	—	—	25	18 to 12	18 to 12	2	—	—
TFP 80	600	60 80	16 to 8 (1.5 to 10mm ²)	16 to 8 (1.5 to 10mm ²) 6 (16 mm ²) crimp terminal	65	16 to 10	16 to *6	1	65	16 to *6
TFP 80 +	600	—	—	—	30	14 to 12	—	2	—	—
TTFP 203	600	20	20 to 14 (0.5 to 2.5mm ²)	20 to 14 (0.5 to 2.5mm ²)	15	20 to 14	20 to 14	2	15	20 to 14
TTFP 2035	600	20	20 to 14 (0.5 to 2.5mm ²)	20 to 14 (0.5 to 2.5mm ²)	15	20 to 14	20 to 14	2	15	20 to 14
TFE 20	600	—	20 to 14 (0.5 to 2.5mm ²)	20 to 14 (0.5 to 2.5mm ²)	—	20 to 14	20 to 14	1	—	20 to *14
TFE 20 +	600	—	—	—	—	20 to 16	18 to 14	2	—	—
TFE 40	600	—	18 to 10 (0.75 to 6mm ²)	18 to 10 (0.75 to 6mm ²)	—	18 to 10	18 to 10	1	—	18 to *10
TFE 40 +	600	—	—	—	—	16 to 12	16	2	—	—

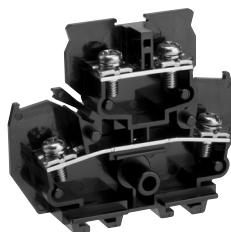
Notes

- The table above is based on connection to the copper bare wire and the crimp terminal. The applicable wires with * indicates connection to the crimp terminal only. Use UL standard parts and c-UL-us standard parts for crimp terminal. Be careful for the following points:
 - Connection to crimp terminal: Use the crimp terminal with insulated coating or insulate the bare crimp terminal with sleeve, tube or tape.
 - Connection to two bare wires: Connect the wire with the same size and type (single wire or stranded). Do not connect the wires with different sizes and types.
- FW1: Factory wiring, FW2: Factory wiring and field wiring
- When FW2 is used in TFP20, TFP40, TFP80, TFE20 and TFE40, use the rating with (+) at the end of the type name.

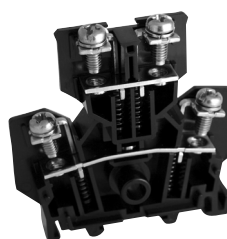
Application				Type name	External dimensions (mm)			
					A	B	C	D
Terminal unit								
TTG series 600V	2mm ² [20A]	M3 x 8 ± screw type		TTG 20 3	62	57	8	6.7
		M3 x 8 ± raised type		TTG 20 U3				
		M3.5 x 8 ± screw type		TTG 20 35				
		M3.5 x 8 ± raised type		TTG 20 U35				
	5.5mm ² [40A]	M4 x 10 ± screw type		TTG 40	67	62	11	9.7
		M4 x 8.5 ± raised type		TTG 40 U				
TT series 600V	1.25mm ² [15A]	M3 x 8 ± screw type		TT 10 SK	62	50.5	8	6.7
		M3 x 8 ± raised type		TT 10 SUK				
	2mm ² [20A]	M3.5 x 8 ± screw type		TT 10 SKM3.5				
		M3.5 x 8 ± raised type		TT 10 SUKM3.5				
	3.5mm ² [30A]	M4 x 10 ± screw type		TT 20 K	67	58	11.5	9.7
		M4 x 10 ± raised type		TT 20 UK				
TTJ 600V	2mm ² [20A]	M3.5 x 8 ± screw type		TTJ 8	48.5	49	8	6.7
		M3.5 x 8 ± raised type		TTJ 8U				
End plate								
For TTG203, TTG20U3, TTG2035 and TTG20U35				TTGA 20	62	58.1	Thickness 8	
For TTG40 and TTG40U				TTGA 40	67	62.6	Thickness 10.5	
For TT10				TTA1SK	62	50.5	Thickness 8	
For TT20				TTA2K	67	59	Thickness 8	
For TTJ8				TTJA8	49	49	Thickness 8	



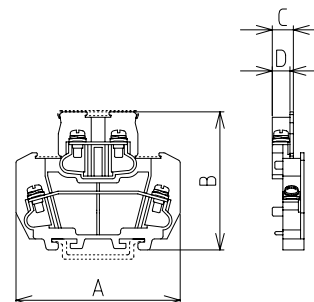
TTG20



TT20K



TTJ8



Rating when the product is used as c-UL-us certified part or EN/IEC standard certified part (TÜV certification CE)

Type name		Rated voltage (V)	Rated current (A)	EN/IEC standard		UL standard			CSA standard	
Screw type	Raised type			Rated current (A)	Applicable wire (AWG/MCM) ^{Note}		Rated current (A)	Applicable wire (AWG/MCM) ^{Note}		Rated current (A)
		Single wire	Stranded wire		Single wire	Stranded wire				
TTJ 8	TTJ 8U	500	20	20 to 14 (0.5 to 2.5mm ²)	20 to 14 (0.5 to 2.5mm ²)	—	—	—	—	—
TTG 203	TTG 20U3	600	20	20 to 14 (0.5 to 2.5mm ²)	20 to 14 (0.5 to 2.5mm ²)	15	20 to 14	20 to 14	15	20 to 14
TTG 2035	TTG 20U35	600	20	20 to 14 (0.5 to 2.5mm ²)	20 to 14 (0.5 to 2.5mm ²)	15	20 to 14	20 to 14	15	20 to 14
TTG 40	TTG 40U	600	40	18 to 10 (0.75 to 6mm ²)	18 to 10 (0.75 to 6mm ²)	30 25	18 to *10 18 to 12	18 to *10 18 to 12	30	18 to *10

Notes

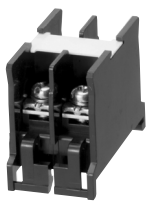
The table above is based on connection to the copper bare wire and the crimp terminal. The applicable wires with * indicates connection to the crimp terminal only. Use UL standard parts and c-UL-us standard parts for crimp terminal. Be careful for the following points:

- Connection to crimp terminal: Use the crimp terminal with insulated coating or insulate the bare crimp terminal with sleeve, tube or tape.
- Connection to two bare wires: Connect the wire with the same size and type (single wire or stranded). Do not connect the wires with different sizes and types.

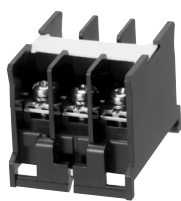
Quick joint rail type terminal block

TN Series

Application				Type name	External dimensions (mm)				
					A	B	C	D	
Terminal unit									
600V	1.25mm ²	[15A]	M3	3P integrated structure	TN 13 SBKM3	40	30	25	6.7
	2mm ²	[20A]	M3.5	3P integrated structure	TN 13 SBKM3.5	40	30	25	6.7
	2mm ²	[20A]	M3.5	2P integrated structure	TN 12 BK	40	30	20.5	8
				3P integrated structure	TN 13 BK	40	30	30	8
	5.5mm ²	[40A]	M4	3P integrated structure	TN 20 BK	40	30	35	9.7
	8mm ²	[50A]	M5	3P integrated structure	TN 30 BK	45	34	43	12.2
	22mm ²	[90A]	M6	1P	TN 60 BK	56	38	22	17
	38mm ²	[130A]	M8	1P	TN 100K	74	43	32	24
	100mm ²	[240A]	M10	1P	TN 200K	86	57	39	31
200mm ²	[400A]	M12	1P	TN 400K	125	73	62	52	
150mm ² × 2	[500A]								



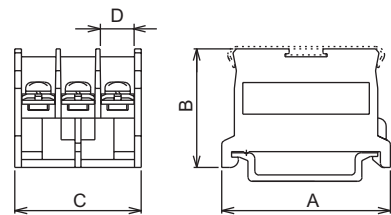
TN12BK



TN13BK



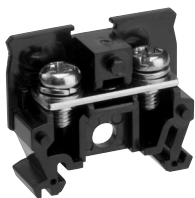
TN200K



Small rail type terminal block for equipment

TXJ Series

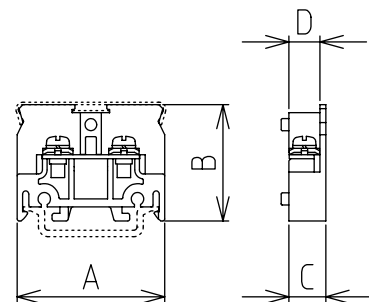
Application				Type name	External dimensions (mm)			
					A	B	C	D
Terminal unit								
250V	1.25mm ²	[10A]	M3 x 6 ± with round washer	TXJ 7	23	19.5	7	6
			M3 x 6 ± screw type	TXJ 7Z	23	19.5	7	6
500V	2mm ²	[20A]	M3.5 x 6 ± with round washer	TXJ 8	28	22	8	6.7
			M3.5 x 6 ± screw type	TXJ 8Z	28	22	8	6.7
End plate								
For TXJ7 and TXJ 7Z				TXJA7	23	19.5	Thickness 2.5	
For TXJ8 and TXJ 8Z				TXJA8	28	22	Thickness 2.5	



TXJ7



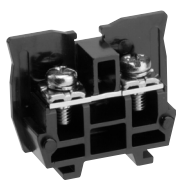
TXJ8



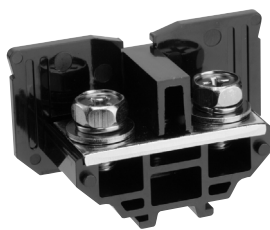
Application			Type name	External dimensions (mm)			
				A	B	C	D
Terminal unit							
600V	1.25mm ² [15A]	M3 x 8 ± screw type	TR 10 SK	32.5	28.5	8	6.7
	2mm ² [20A]	M3.5 x 8 ± screw type	TR 10 K	32	28.5	9.5	8
	5.5mm ² [40A]	M4 x 10 ± screw type	TR 20 K	36.5	30.5	11	9.2
	8mm ² [50A]	M5 x 12 ± screw type	TR 30 K	45.5	34	14.5	12.5
	22mm ² [90A]	M6 x 12 ± with round washer	TR 60 K	53	37	19.5	17
	38mm ² [130A]	M8 x 14 + hexagonal bolt	TR 100 K	71	45	27	24
	100mm ² [240A]	M10 x 20 + hexagonal bolt	TR 200 K	83.5	57.5	39	31
	200mm ² [400A] 150mm ² × 2 [500A]	M12 x 25 hexagonal bolt	TR 400 K	120	73.5	62	52
End plate							
For TR10SK and TR10K			TRA 1 □ K	33	28.5	Thickness 2.5	
For TR20K			TRA 2 □ K	37	30.5	Thickness 2.5	
For TR30K			TRA 3 □ K	46	34	Thickness 3.2	
For TR60K			TRA 6 □ K	53	37.5	Thickness 3.3	
For TR100K			TRA 10 □ K	71	45	Thickness 4	

Remarks

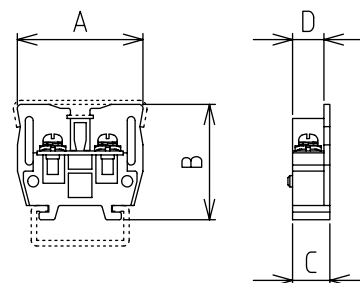
- of the end plate type name indicates the designated symbol for presence of seal groove. No symbol (With seal groove), N (No seal groove)
- The type without seal groove also functions as seal stopper. Two are used at both ends.



TR20K



TR100K

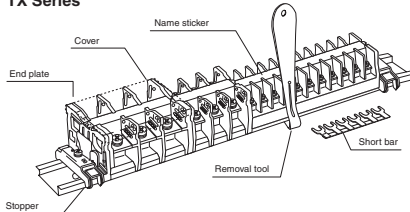


Rail Type Terminal Block Accessory

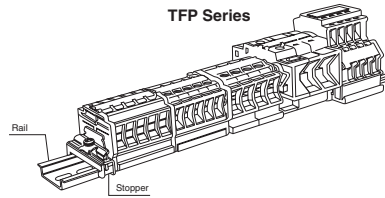
Select the accessory that is applicable to terminal unit. Furthermore, the accessories (rail support, removal tool etc.) that enable the use of terminal block more conveniently are also prepared.

List of applicable accessories (TX, TXU, TXW, TFP, TTG, TTJ, TT Series)

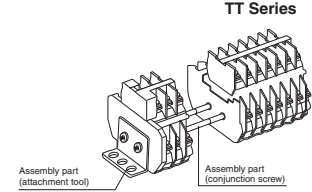
TX Series



TFP Series



TT Series

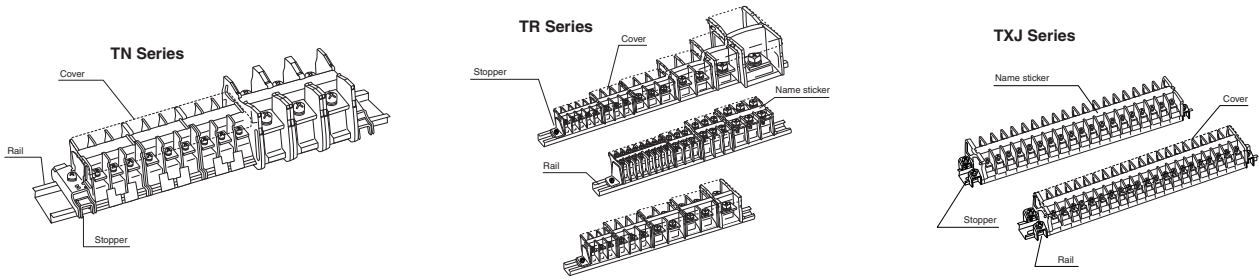


Terminal unit	End plate	Cover	Name sticker	Rail	Stopper	Short bar	Assembly part
TX 7	TXA1	TXB2, TXB2L	TXC07	(DIN rail) TXDA2, TXDA2M (Kasuga C type rail) TRD2, TRD2M (DIN / C type dual purpose) TRDA2, TRDA2M	(for DIN rail) TXE1 TXE2 JTXE3	TJ762, TJ7202	Completed product of assembled terminal block is available.
TX 10 S M3			TRC21				
TX 10 S			TRC22				
TX 10			TRC23				
TX 20			TXC2				
TX 30	TXA3	TRB3, TRB3L	TXC23	(for Kasuga C type) TRE1	TJ164, TJ1204	TJ162, TJ1202 TJ262 JTJ302B JTJ802B	
TX 50	TXA5	TRC21					
TX 60	TXA6	TRC22					
TX 100	TXA10	TRB10N, TRB10N03	TRC23				
TX 150	TXA15	TRB10N					
TX 200	Not necessary	TRB20N, TRB20N03	Included (TRC21, TRC22, TRC23 can be used)				
TX 300		TRB20N, TRB20N03					
TX 400		TRB40N, TRB40N03					
TX 600		TRB40N, TRB60N03					
TXU 7	TXUA1	TXB2, TXB2L	TRC21 TRC22 TRC23			TJ762, TJ7202 TJ164, TJ1204 TJ162, TJ1202 TJ262 JTJ302B JTJ802B	Completed product of assembled terminal block is available.
TXU 10 S M3							
TXU 10 S							
TXU 10							
TXU 20							
TXU 30	TXUA3	TRB3, TRB3L					
TXU 50	TXUA5						
TXU 60	TXUA6	TRB6					
TXU 100	TXUA10	TRB10N, TRB10N03					
TXW100	TXWA10	TRB10N					
TXW150	TXA15						
TXW200	TXWA20	TRB20N					
TXW400	TXWA40	TRB40N					
TFP 15	TFPA20	(TFPB20)					TRC21
TFP 20			TRC22				
TFP 40			TRC23				
TFP 80							
TTFP 203			(TTFPB20)				
TTFP 2035			Included (PE symbol sticker)	TNDS2	Set use of TXE2 and TXE2C is recommended TXE2, JTXE3	TJ164B TJ1204B	TTS1S (conjunction screw) TTFPM1S (attachment tool)
TFE 20	—	—					
TFE 40							
TTG 203	TTGA20	TTB3 (upper stage) TTB2 (lower stage)	TRC21	(DIN rail) TXDA2, TXDA2M TNDS2, JXDB (DIN / C type dual purpose) TRDA2, TRDA2M	Set use of TXE2 and TXE2C is recommended	TJ164B TJ1204B	TTS1S (conjunction screw) TTFPM1S (attachment tool)
TTG 20U3			TRC22				
TTG 2035			TRC23				
TTG 20U35							
TTG 40	TTGA40	TXB2 (upper stage) TTB2 (lower stage)				JTJ264B	TTS2 (conjunction screw) TTFPM1S (attachment tool)
TTG 40 U							
TT 10 SK	TTA1SK	TTB1S TTB1SL	TRC21	(DIN rail) TXDA2, TXDA2M TNDS2, JXDB (Kasuga C type rail) TRDA2, TRDA2M (DIN / C type dual purpose) TRD2, TRD2M	Set use of TXE2 and TXE2C is recommended	TJ161 TJ1201	TTS1S (conjunction screw) TTM1S (attachment tool)
TT 10 SUK			TRC22				
TT 10 SK M3.5			TRC23				
TT 10 SUK M3.5							
TT 20 K	TTA2K	TXB2 (upper stage) TTB2 (lower stage)				TJ262	TTS2 (conjunction screw) TTM1S (attachment tool)
TT 20 UK							
TTJ 8	TTJA8	TXJB8 (upper stage)	TRC11	TXJD15A ^{Note}	TTJE1	TJ161 TJ1201	TTS8 (conjunction screw) TTM1S (attachment tool)
TTJ 8 U		TTJB8 (lower stage)	TRC12 TRC13				

Note TTJ8 and TTJ8U can use TXDA and TNDS rails (stopper is TXE2) other than TXJD15A rail.

Terminal Blocks

List of applicable accessories (TN, TR, TXJ Series)



Terminal unit	End plate	Cover	Name sticker	Rail	Stopper	Short bar	Assembly part			
TN 13 SBKM3	Not necessary	TXB1	Included (TRC21, TRC22, TRC23 can be used)	(DIN rail) TXDA2, TXDA2M TNDS2	(for DIN rail) TXE1 TXE2 JTXE3	—	—			
TN 13 SBK M3.5		TXB1L								
TN 12 BK										
TN 13 BK										
TN 20 BK										
TN 30 BK		TRB3, TRB3L								
TN 60 BK		TRB6								
TN 100 K		TRB10N								
TN 200 K		TRB20N, TRB20N03								
		TRB40N, TRB40N03								
TR 10 SK	TRA1K	TRB1	TRC11	(Kasuga C type rail) TRD2, TRD2M	(for Kasuga C type) TRE1	TJ161, TJ1201	—			
TR 10 K	TRA1NK	TRB1L				TRC12		TJ162, TJ1202		
TR 20 K	TRA2K	TRB2	TRC21 TRC22	(DIN / C type dual purpose) TRDA2, TRDA2M	(for DIN rail) TXE1, TXE2	TJ262				
	TRA2NK	TRB2L				—				
TR 30 K	TRA3K	TRB3				TRC21 TRC22		(DIN / C type dual purpose) TRDA2, TRDA2M	(for DIN rail) TXE1, TXE2	—
	TRA3NK	TRB 3L								
TR 60 K	TRA6K	TRB6				TRC21 TRC22		(DIN / C type dual purpose) TRDA2, TRDA2M	(for DIN rail) TXE1, TXE2	—
	TRA6NK	TRB6								
TR 100 K	TRA10K	TRB10N				TRC21 TRC22		(DIN / C type dual purpose) TRDA2, TRDA2M	(for DIN rail) TXE1, TXE2	—
	TRA10NK	TRB10N03								
TR 200 K	—	TRB20N TRB20N03				TRC21 TRC22	(DIN / C type dual purpose) TRDA2, TRDA2M	(for DIN rail) TXE1, TXE2	—	
		TRB40N TRB40N03								
TR 400 K		TRB40N TRB40N03	TRC21 TRC22	(DIN / C type dual purpose) TRDA2, TRDA2M	(for DIN rail) TXE1, TXE2	—				
		TRB40N TRB40N03								
TXJ 7	TXJA7	TXJB7 TXJB7L	TXJC51 TXJC52	(DIN15mm rail) TXJD15A	TXJE1	TJ7201	—			
TXJ 8	TXJA8	TXJB8 TXJB8L	TRC11 TRC12			TJ161, TJ1201				

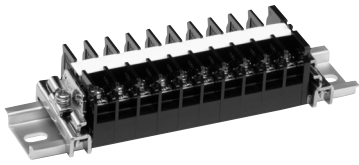
List of applicable accessories (TXLU, TXF, TXS, TXW-D Series)

This is the list of applicable accessories for special purpose terminal block rail type.

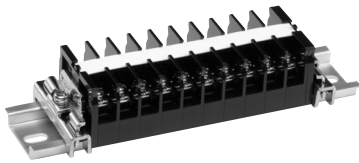
Terminal unit	End plate	Cover	Name sticker	Rail	Stopper	Short bar	Assembly part
TXLU 10 S	TXLUA1	TXB2 TXB2L	TRC21 TRC22 TRC23	(DIN rail) TXDA2, TXDA2M TNDS2, JXDB	(for DIN rail) TXE1 TXE2 JTXE3	TJ164B, TJ1204B	—
TXLU 20						TJ262B	
TXF 10	TXFA1	—	Included	(DIN / C type dual purpose)	(for Kasuga C type) TRE1	—	—
TXF 10 N							
TXS 20	TXFA1	TXB1, TXB1L	TRC21	(Kasuga C type rail) TRD2, TRD2M	(for Kasuga C type) TRE1	—	—
TXW100D	TXWA10	TRB10N	TRC22			—	—
TXW200D	TXWA20	TRB20N	TRC23			—	—

End plate

This is used for terminal of assembled terminal unit. When two sheets are used for both ends, they also work as stopper of sticker. Furthermore, it is also possible to use one sheet for one side by bending and removing the lug for pressing sticker.



When one sheet is used for one side



When two sheets are used for both sides

(for TR Series)

Use one sheet for the terminal of assembled terminal unit. However, it is not necessary for TR200 and TR400. As the N type has no groove for leading name sticker, it is possible to use two sheets for both ends to use them as stopper of sticker too.

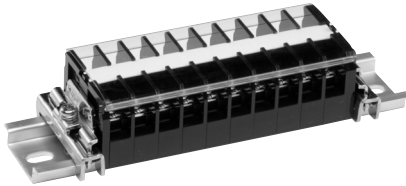
Type name	Applicable unit	Thickness (mm)	General weight
TXA 1	TX7 to TX20	3	2.5g
TXA 3	TX30	3	4g
TXA 5	TX50	3	4g
TXA 6	TX60	3.5	5.5g
TXA 10	TX100	4	11g
TXA 15	TX150, TXW150	4	14g
TXUA 1	TXU7 to TXU20	3	2.5g
TXUA 3	TXU30	3	4.5g
TXUA 5	TXU50	3	4.5g
TXUA 6	TXU60	3.5	6g
TXUA 10	TXU100	4	14g
TXFA 1	TXF10, TXF10N, TXS20	3.5	10g
TXWA 10	TXW100, TXW100D	4	14g
TXWA 20	TXW200, TXW200D	4	17g
TXWA 40	TXW400	5	30g
TTA 1 SK	TT10SK, TT10SUK	8 with two sheets	12.7g
TTA 2 K	TT20K, TT20UK	11 with two sheets	22g
TTJA 8	TTJ8, TTJ8U	8 with two sheets	11g
TXJA 7	TXJ7	2.5	1.5g
TXJA 8	TXJ8	2.5	2g
TFPA 20	TFP15, TFP20	3	2.5g
TFPA 40	TFP40	3	5g
TFPA 80	TFP80	3	7g
TTFPA 20	TTFP203, TTFP2035	8 with two sheets	13g
TTGA 20	TTG203, TTG2035, TTG20U3, TTG20U35	8 with two sheets	13g
TTGA 40	TTG40, TTG40U	10.5 with two sheets	22g
TXLUA 1	TXLU10S, TXLU20	3.5	3g

Type name		Applicable unit	Thickness (mm)	General weight
There is a groove for sticker	There is no groove for sticker			
TRA 1 K	TRA 1 NK	TR10K, TR10SK	2	2g
TRA 2 K	TRA 2 NK	TR20K	2	2g
TRA 3 K	TRA 3 NK	TR30K	3	2.5g
TRA 6 K	TRA 6 NK	TR60K	3	5g
TRA 10 K	TRA 10 NK	TR100K	3.5	10g

Terminal Blocks

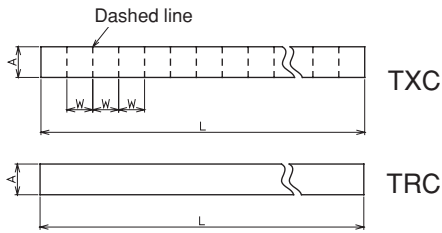
Cover

This cover is made from transparent polycarbonate, and set-in type. For TX100 or greater models, 3P dedicated products are also available. TT10SK type can be attached to upper stage only, TT20K and TTJ8 types can be attached to both of upper stage and lower stage.



Type name	Applicable unit	Width x length (mm)
TXB 1	TXS20, TN13SBK, TN12BK, TN13BK,	37 × 500
TXB 1 L	TN20BK	37 × 1000
TXB 2	TX7, TX10S, TX10, TX20, TXU7, TXU10S,	38 × 500
TXB 2 L	TXU10, TXU20, For 2-stage terminal block upper stage (TT20K, TT20UK, TTG40, TTG40U) , TXLU10S, TXLU2	38 × 1000
TRB 1	TR10K	35.5 × 500
TRB 1 L		35.5 × 1000
TRB 2	TR20K	40 × 500
TRB 2 L		40 × 1000
TRB 3	TX30, TX50, TXU30, TXU50, TN30BK,	49 × 500
TRB 3 L	TR30K	49 × 1000
TRB 6	TX60, TXU60, TN60BK, TR60K	56 × 500
TRB 10 N	TX100, TX150, TXU100, TXW100, TXW150, TN100K, TR100K	75 × 500
TRB 20 N	TX200, TX300, TXW200, TN200K, TR200K	87 × 500
TRB 40 N	TX400, TXW400, TX600, TN400K, TR400K	124 × 500
TRB 10 N 03	TX100, TXU100 (dedicated to 3P), TR100K (dedicated to 3P)	75 × 85
TRB 20 N 03	TX200 (dedicated to 3P), TR200K (dedicated to 3P)	87 × 117
TRB 30 N 03	TX300 (dedicated to 3P)	87 × 138
TRB 40 N 03	TX400 (dedicated to 3P), TR400K (dedicated to 3P)	124 × 186
TRB 60 N 03	TX600 (dedicated to 3P)	124 × 192
TTB 1 S	TT10SK, TT10SUK	31.5 × 500
TTB 2	TT20K, TT20UK, TTG20, TTG20U, TTG40, TTG40U for lower stage	10.4 × 500
TTB 3	TTG203, TTG2035, TTG20U3, TTG20U35	34 × 500
TXJB 8	TXJ8, TTJ8, TTJ8U for upper stage	29.5 × 500
TXJB 8L		29.5 × 1000
TTJB 8	TTJ8, TTJ8U for lower stage	14 × 500
TXJB 7	TXJ7	24.5 × 500
TXJB 7L		24.5 × 1000

Name sticker



It is possible to set the terminal No. etc. on it. As the partitioning line is printed for TXC type, it is possible to attach it to terminal unit after setting a seal on it, and it is very convenient.

Type name	Dimensions (mm)		Applicable unit		Material	L (length)	
	Width A	Width of partitioning line W	TX / TT Series	Other series			
TXC 07	9.5	Front	7.3	TX 7	Polyvinyl chloride (Thickness 0.5mm)	5m	
		Back	8	TX 10S			
TXC 073	9.5	Front	7.3	TX 7		Polypropylene (Thickness 0.5mm)	5m
		Back	8	TX 10S			
TXC 1	9.5	Front	8	TX 10S		Polyvinyl chloride (Thickness 0.5mm)	5m
		Back	9.5	TX 10			
TXC 13	9.5	Front	8	TX 10S		Polypropylene (Thickness 0.5mm)	5m
		Back	9.5	TX 10			
TXC 2	9.5	Front	11.5	TX 20		Polyvinyl chloride (Thickness 0.5mm)	5m
		Back	14.5	TX 30			
TXC 23	9.5	Front	11.5	TX 20		Polypropylene (Thickness 0.5mm)	5m
		Back	14.5	TX 30			
TRC 21	9.5	Plain	TX / TT Series Every model (other than TTJ8)	TFP TTG TR Series (TR30 or greater)		Fiber	5m
TRC 21 L230						Polyvinyl chloride (Thickness 0.5mm)	230m
TRC 22						Polyvinyl chloride (Thickness 0.5mm)	5m
TRC 22 L100						Polypropylene (Thickness 0.5mm)	100m
TRC 23						Polypropylene (Thickness 0.5mm)	5m
TRC 23 L100						Polypropylene (Thickness 0.5mm)	100m
TRC 11	6.5	Plain	TTJ8 TTJ8U	TR10SK TR10K TR20K		Fiber	5m
TRC 11 L230						Polyvinyl chloride (Thickness 0.5mm)	230m
TRC 12					Polyvinyl chloride (Thickness 0.5mm)	5m	
TRC 12 L100					Polypropylene (Thickness 0.5mm)	100m	
TRC 13					Polypropylene (Thickness 0.5mm)	5m	
TRC 13 L100					Polypropylene (Thickness 0.5mm)	100m	
TXJC 51	5.5	Plain	TXJ7, TXJ7Z		Fiber	5m	
TXJC 52					Polyvinyl chloride (Thickness 0.5mm)	5m	
TXJC 53					Polypropylene	5m	
TXJC 53 L100					Polypropylene (Thickness 0.5mm)	100m	

Remarks

- The name sticker made from polyvinyl chloride is planned to be integrated into the one made from polypropylene.
- If you print with Kasuga Markie on TXJ53, TRC13, TRC23, use the ink ribbon MK-880HRB. With this ribbon, it is possible to print on mark tube.

CAUTIONS

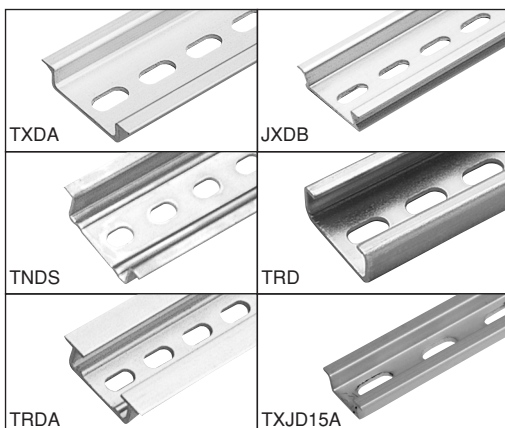
- When you use the one made from fiber (TRC21, TRC11), it is not possible to print with auto printer. Stamp with rubber stamp and apply it with tape.
- When the number of pins increases, as the TXC type may generate gap because the tolerance is counted, please use it referencing the table below.

Acceptable maximum number of units of sticker with partitioning line

Terminal unit	Number of units
TX 7, TX10S	60
TX10	50
TX20	40
TX30	30

Rail

For multi-rail type terminal block, it is possible to attach it to four types of rails (DIN35mm width made from aluminum, made from steel, C type, DIN / C type dual purpose).



Type name	Type	Material	Height (mm)	Length (mm)	General weight (x1)
TXDA 2	DIN35mm width rail	Aluminum	7.5	1005	175g
TXDA 2 M		Steel	10	2010	350g
TNDS 2		Aluminum	7.5	1005	365g
JXDB	C type rail	Aluminum	7.5	990	177g
TRD 2		Steel	10	1005	455g
TRD 2 M	Rail for DIN / C type dual purpose	Aluminum	10	1005	215g
TRDA 2				2010	430g
TRDA 2 M		Aluminum black Alumite	10	1005	215g
TRDA 2 K					
TXJD 15 A	DIN15mm width rail	Aluminum	5	1005	64g

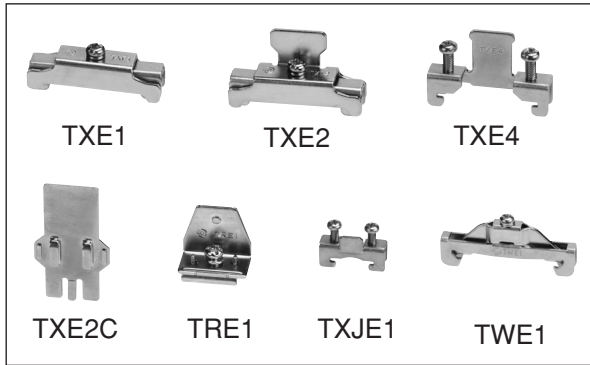
Remarks

- Use the steel rail after applying rust resisting coating material to cut surface.
- When you use the rail leaving long, the intensity increases adequately by securing a few points not only both ends.

Terminal Blocks

Stopper

Attach this to both ends of assembled terminal unit to fix the unit to rail firmly. It is also possible to attach or remove from surface of rail.



Type name	Application	General weight per one piece
TWE 1	DIN35mm width rail	Slim type 10.5g
TXE 1	(TXDA, TNDS, JXDB, TRDA) supported	Standard 20g
TXE 2		Large type 21g
TXE 4		2 points fixing 12g
TXE 2 C	(accessory plate for TXE2) 8g	
TRE 1	C type rail supported (TRD, TRDA) 12g	
TXJE 1	DIN15mm width rail (TXJD15A) supported 4g	

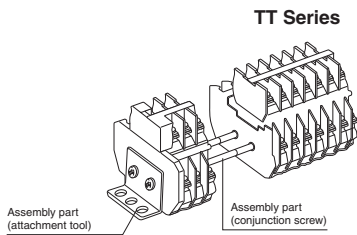
Remark

As TXE2 has a unit-fixing bracket, it is possible to fix the terminal firmly. Especially, it is optimum for large type terminal block of TX30 or greater. For TT Series (2-stage type terminal block), it is fixed more firmly by attaching TXE2C (accessory plate) additionally.

Assembly part

Conjunction screw and attachment bracket for assembling (assembled terminal block) 2-stage type terminal block without rail.

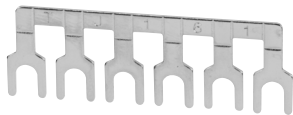
[conjunction screw (nut is included) x10, attachment bracket x10 included]



For external dimensions and cut dimensions of conjunction screw, please refer to terminal block accessories.

	Product name	Type name	Application
Conjunction screw	For TT10S	TTS 1 S 05	3 to 5 units (length 54mm)
	TTG203	TTS 1 S 10	6 to 10 units (length 94mm)
	TTG20U3	TTS 1 S 15	11 to 15 units (length 134mm)
	TTG2035	TTS 1 S 20	16 to 20 units (length 174mm)
	TTG20U35	TTS 1 S 25	21 to 25 units (length 214mm)
	TTFP203	TTS 1 S 30	26 to 30 units (length 254mm)
	TTFP2035		
	For TT20	TTS 2 05	3 to 5 units (length 76mm)
		TTS 2 10	6 to 10 units (length 134mm)
		TTS 2 15	11 to 15 units (length 192mm)
		TTS 2 20	16 to 20 units (length 250mm)
		TTS 2 25	21 to 25 units (length 307mm)
		TTS 2 30	26 to 30 units (length 365mm)
	TTG40	TTS 4 05	3 to 5 units (length 75.5mm)
	TTG40U	TTS 4 10	6 to 10 units (length 135.5mm)
		TTS 4 15	11 to 15 units (length 184mm)
	TTS 4 20	16 to 20 units (length 244mm)	
	TTS 4 25	21 to 25 units (length 306mm)	
	TTS 4 30	26 to 30 units (length 350mm)	
For TTJ8	TTS 8 05	3 to 5 units (length 56mm)	
	TTS 8 10	6 to 10 units (length 97mm)	
	TTS 8 15	11 to 15 units (length 136mm)	
	TTS 8 20	16 to 20 units (length 176mm)	
	TTS 8 25	21 to 25 units (length 216mm)	
	TTS 8 30	26 to 30 units (length 256mm)	
Attachment bracket	TT10SK TT20K	TTM 1 S	One piece is used for both sides
	For TTFP, For TTG	TTFPM 1 S	One piece is used for both sides

Short bar



TJ161A (standard)



TJ161B (with coating)



TJ161C (bending)

This is a transfer bracket convenient for common wiring. There are three types (2-pin, 6-pin, and 20-pin), and each type can be cut for required number of pins by wire cutter etc. The material is brass nickel plating. You can select the short bar from three types below.

- A type: type without coating
- B type: type polyvinyl chloride is coated on A type
- C type: type bending is processed for A type

Remarks

1. Here provides accessories applicable to rail type terminal block. For the short bars that are not provided here, please refer to "Terminal Block Accessory" .
2. Use the short bar so that the total current of every pin which short-circuits is conducting current or less of short bar.

Type name	No. of pins	Type	Applicable terminal block		Conducting current	General weight
			Rail type terminal block	Assembled terminal block		
TJ 161 A	6	Without coating	TT10SK, T10SUK, TTJ8,	TC10S, TC10SU, TEN8, TEU8	20A	—
TJ 161 B	6	With coating				
TJ 161 C	6	Bending				
TJ 1201 A	20	Without coating	TTJ8U, TR10SK, TXJ8			—
TJ 1201 B	20	With coating				
TJ 162 A	6	Without coating	TX10, TXU10, TR10K	TXM10, TXUM10	20A	—
TJ 162 B	6	With coating				
TJ 162 C	6	Bending				
TJ 1202 A	20	Without coating				—
TJ 1202 B	20	With coating				
TJ 163 A	6	Without coating	—	T10, TL15	20A	—
TJ 163 B	6	With coating				
TJ 163 C	6	Bending				
TJ 164 A	6	Without coating	TX10S, TXU10S, TFP20,	TXM10S, TXUM10S	20A	—
TJ 164 B	6	With coating				
TJ 164 C	6	Bending				
TJ 1204 A	20	Without coating	TTG203, TTF2035,			—
TJ 1204 B	20	With coating				
TJ 261 A	6	Without coating	TR20K	TEN11, TEU11	30A	—
TJ 261 B	6	With coating				
TJ 261 C	6	Bending				
TJ 262 A	6	Without coating	TX20, TXU20, TT20K, TXLU20	TXM20, TXUM20	30A	—
TJ 262 B	6	With coating				
TJ 262 C	6	Bending				
TJ 263 A	6	Without coating	—	T20, TL25	30A	—
TJ 263 B	6	With coating				
TJ 263 C	6	Bending				
TJ 762 A	6	Without coating	TX7, TXU7	TXM7, TXUM7	20A	—
TJ 762 B	6	With coating				
TJ 762 C	6	Bending				
TJ 7202 A	20	Without coating				—
TJ 7202 B	20	With coating				
TJ 7203 B	20	With coating	TFP15	TFPM15	20A	—
JTJ 264 B	6	With coating	TFP40, TFG40, TFG40U	TFPM40, TTGM40, TTGM40U	40A	—
JTJ 802 B	2	With coating	TFP80, TX50, TXU50	TFPM80, TXM50, TXUM50	80A	—
TJ 7201 A	20	Without coating	TXJ7	TEN7	20A	—
TJ 7201 B	20	With coating				
JTJ 302 B	2	With coating	TX30, TXU30, TR30K	TXM30, TXUM30, T30, TL35, TEU14	50A	—
JTJ 602 B	2	With coating	TX60, TXU60, TR60K	TXM60, TXUM60, TC60	90A	—
JTJ 1002 B	2	With coating	TX100, TXU100, TR100K	TXM100, TXUM100	130A	—

Terminal Blocks

Unit removal tool



This is a tool that removes the unit attached to DIN rail (TXDA2, TNDS2). This can be used for TX7 to TX20 and TXU7 to TXU20.

Product name	Type name	Applicable unit
Unit removal tool	TXK	TX7 to 20, TXU7 to 20

Rail support



TRGA



TRGB



TRGC1



TRGC1A

This makes wiring easy by suspending the rail or changing the attachment angle.

With this, it is possible to attach the terminal block to corner of board or narrow attachment space.

Application		Type name	General weight per one piece
└ type 45°	Height 23mm	TRGA	30g
Trapezium	Height 17mm	TRGB	25g
└ type	Height 50mm	TRGC 1	60g
	Height 90mm	TRGC 2	90g
	Height 130mm	TRGC 3	120g
└ type 30°	Height 50mm	TRGC 1 A	60g
	Height 90mm	TRGC 2 A	90g
	Height 130mm	TRGC 3 A	120g

Remarks

1. TRGC1A, TRGC2A, and TRGC3A are the one that the rail attachment parts of TRGC1, TRGC2, and TRGC3 are bent by 30°.
2. As there is a hole of ϕ 4.3 (prepared hole of M5) is allocated at the neck part of TRGC3 and TRGC3A, it can be used as an attachment hole of rail or other equipment.